



Choose your Bar Option

Do you have a minimum 41mm on your Shank?



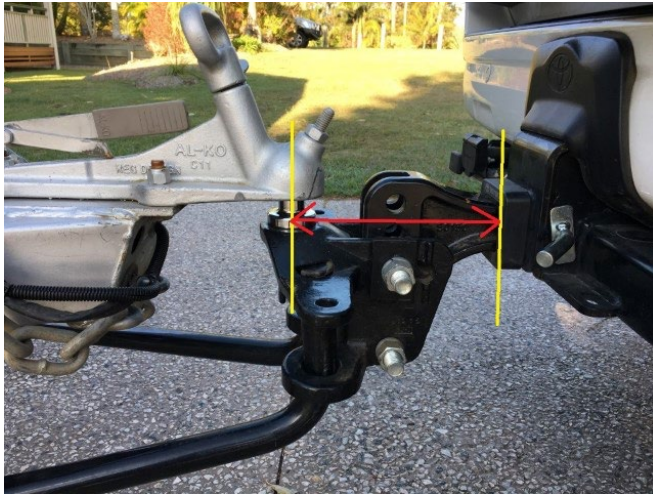
If Yes then the **Adjustable Shank option** is the best solution



If bumper clearance is an issue then the **Standard Shank option** is best.



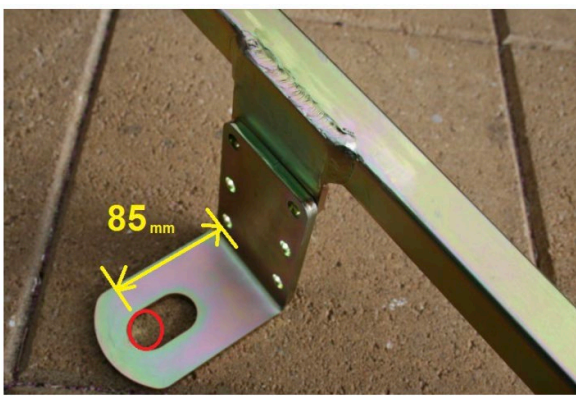
For either of these Shank options we need this additional measurement



If you do not have a minimum 41mm on the Shank then the **Tongue option** is the next best choice



You will need a minimum of 85mm for the **Tongue option** to work well and so the coupling can turn.



If neither of these work for you then the **Post option** may be best.



Finally the **Cut Out Angle option** could also be best.

